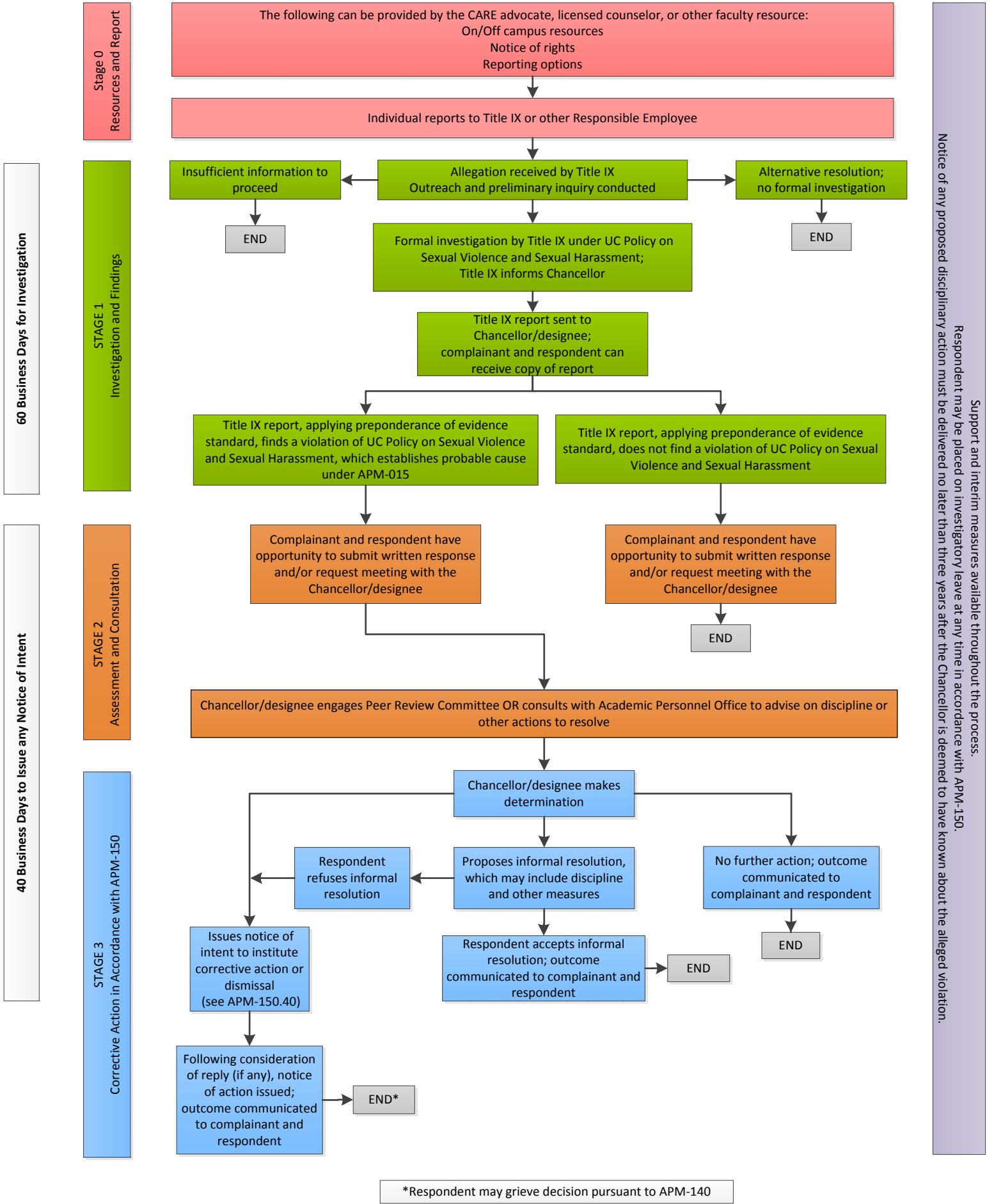


UNIVERSITY OF CALIFORNIA
 NON-SENATE (NON-REPRESENTED) FACULTY ADJUDICATION MODEL – PROCESS FLOW CHART



Support and interim measures available throughout the process. Respondent may be placed on investigatory leave at any time in accordance with APM-150. Notice of any proposed disciplinary action must be delivered no later than three years after the Chancellor is deemed to have known about the alleged violation.

*Respondent may grieve decision pursuant to APM-140